

University Eye Center

University Eye Center Main Entrance

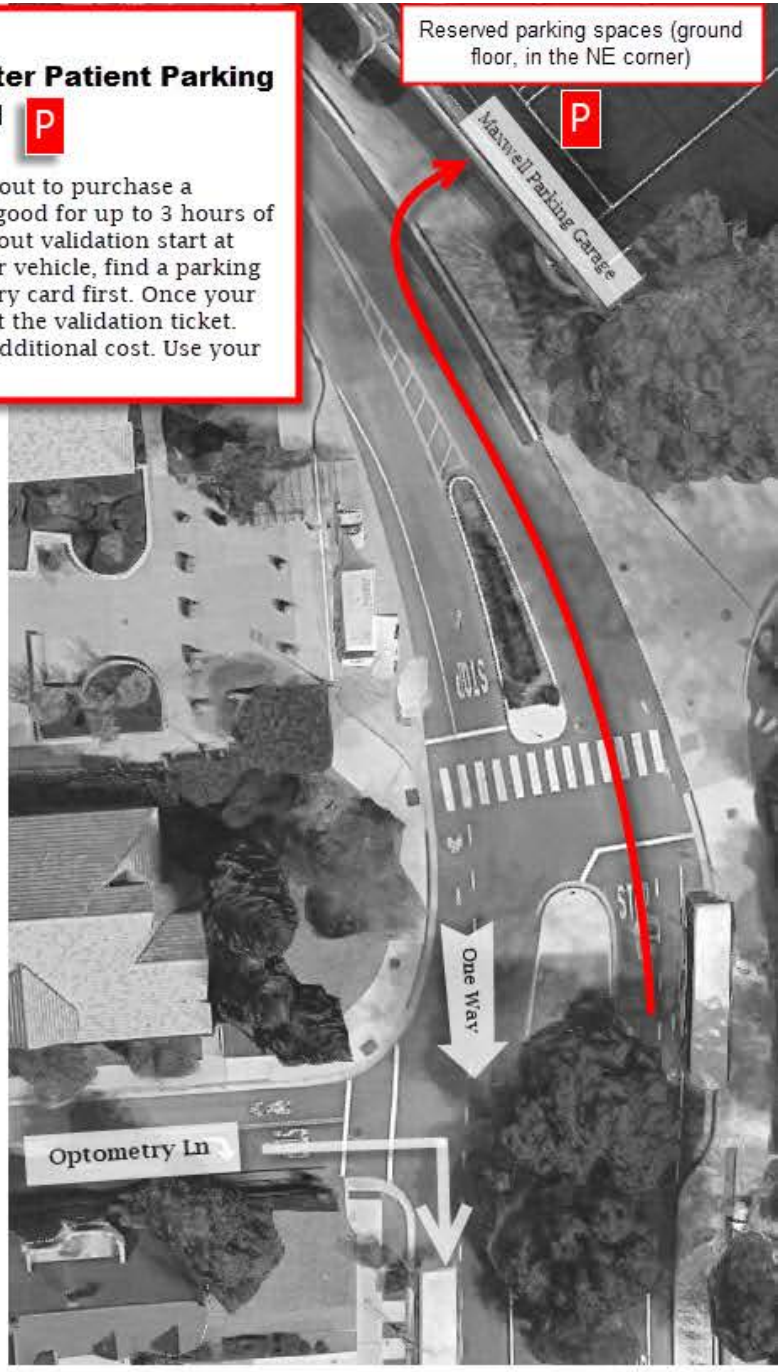
Parking Attendant Booth

University Eye Center Reserved Parking Spots  
**P** (\$3 - Up to 3 Hours)

**\*Maxwell Parking Garage**  
**Reserved University Eye Center Patient Parking**  
**Available - 2175 Gayley Road **P****  
**(\$2 - Up to 3 Hours)**  
Present your white entry card at check-out to purchase a validation ticket. Validation tickets are good for up to 3 hours of parking and cost \$2. Parking rates without validation start at \$3.00 per hour. When returning to your vehicle, find a parking payment kiosk and insert the white entry card first. Once your card has been read and accepted, insert the validation ticket. Parking under 3 hours will require no additional cost. Use your validated card to exit the garage.

Maxwell Parking

Reserved parking spaces (ground floor, in the NE corner)



Maxwell Parking Garage

One Way

Optometry Ln

Optometry Ln